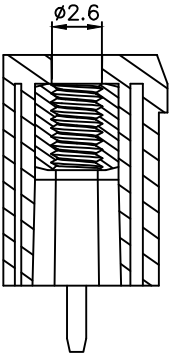
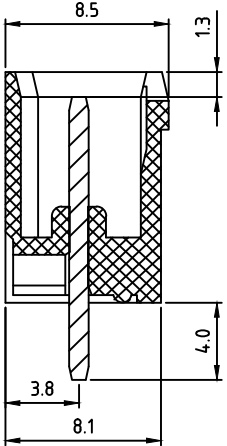


### SPECIFICATIONS

Current Rating: 20 Amp/20 Amp/20 Amp  
 Voltage Rating: 300V/300V/300V  
 Dielectric withstanding: 1.6KV/2.5KV/2.5KV  
 Operating Temperature: -40°C~+115°C  
 Max Processing Temp: 260°C±5°C for 5 Seconds  
 Solder Pin: Tin Plated  
 Insulator Material: Thermoplastic, UL94V-0  
 Flange Screw: Brass, M2.5  
 Safety Approval:



RPLJ-XXGEXJ-FG

No. of Poles  
2~24

- Color:
- J: Black(RAL9005)
  - B: Red(RAL3001/D)
  - C: Orange(RAL2011/P)
  - D: Yellow(RAL1018/A)
  - E: Green(RAL6018/T)
  - F: Blue(RAL5015/A)
  - H: Grey(RAL7035/D)
  - I: White(RAL1102)
  - 3: Green(RAL6018/U)

FG: RoHS Compliant  
(Lead <4% in Copper Alloy)

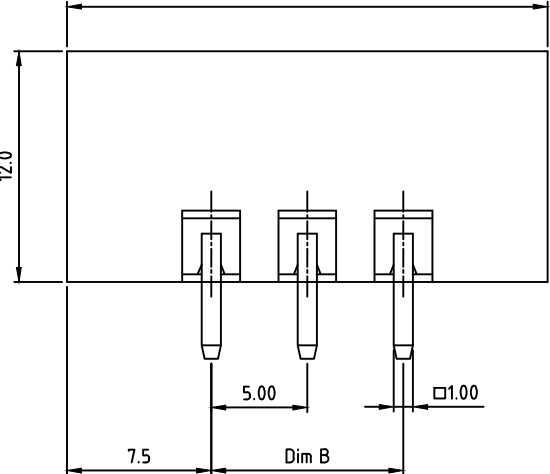
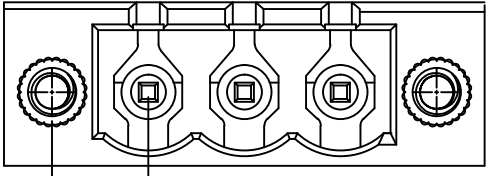
APTOS Technology CONFIDENTIAL  
 This document, and all information it contains, are the confidential, proprietary property of APTOS Technology. Disclosure, duplication or distribution of this document, or any information it contains, in whole or part, without prior written permission from APTOS Technology is strictly prohibited

Dimensions	
A	(N+2)×5.0
B	(N-1)×5.0
Poles	Tolerance
2P-6P	±0.15
7P-12P	±0.20
13P-18P	±0.25
19P-24P	±0.30

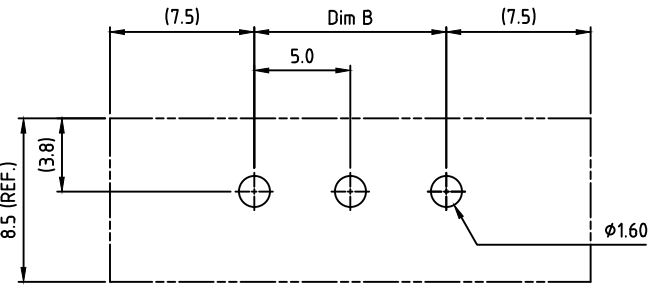
GENERAL TOLERANCE UNLESS OTHERWISE SPECIFIED	
xxx. ± X	.xx ± 0.10
xx. ± X	.xxx ± X
x. ± 0.50	x' ± 1"
.x ± 0.30	.x' ± 1"
REV. A	DRAWN
DATE 10/22/09	CHECKED
SCALE 4:1	APPROVED
UNIT mm	



RPLJ Series  
 5.00mm Terminal Blk Hdr w/Flange  
 PRODUCT NO. RPLJ-XXGEXJ-FG  
 FILE NAME: RPLJ-XXGEXJ-FG LF APD.DWG



N = Number of contacts



RECOMMENDED PCB LAYOUT