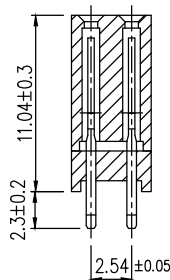
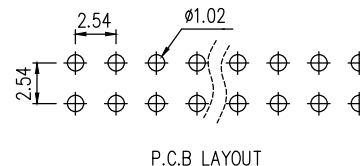


SPECIFICATIONS
 CURRENT RATING : 3 AMPS
 INSULATOR RESISTANCE : 5000 MEGOHMS MIN.
 CONTACT RESISTANCE : 20 MILLIOHMS MAX.
 DIELECTRIC WITHSTANDING : AC 500V
 OPERATING TEMPERATURE : -40°C - +105°C
 MAX PROCESSING TEMP : 230°C FOR 30~60 SECONDS
 (260°C FOR 10 SECONDS)
 CONTACT MATERIAL : PHOSPHOR BRONZE
 INSULATOR MATERIAL : POLYESTER, UL 94V-0
 STANDARD : NYLON-6T
 CONTACT PLATED : FULL GOLD FLASH



HOW TO ORDER
 QPHFZ-XX-XX-XX-FG
 Series No. (XX)
 Number of Contacts (XX) 40, 50, 64
 Elevated Story Type (XX) See "Table A"
 Contact Plated (FG)

Selective Plated Type		Full Tin Type
Gold Plated on Contact Area	Tin Plated on Solder Area	
VB : Gold Flash, Tin 100u"		VA: Tin 100u"
VC : Gold 3u", Tin 100u"		
VD : Gold 5u", Tin 100u"		
VE : Gold 10u", Tin 100u"		
VF : Gold 15u", Tin 100u"		
VJ : Gold 30u", Tin 100u"		

Table A

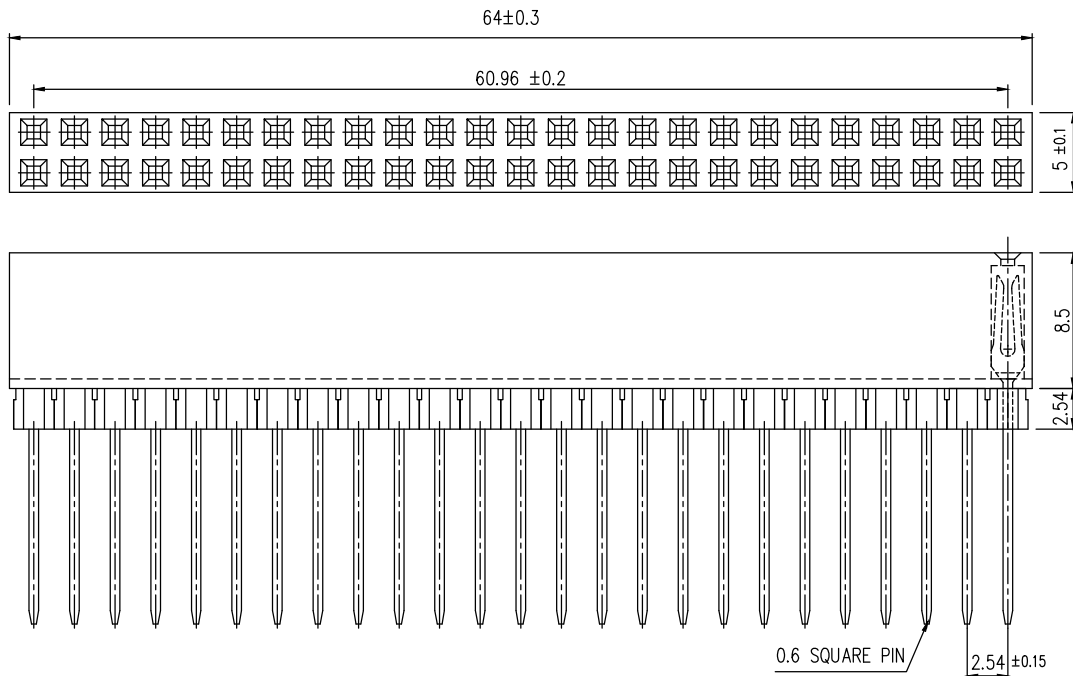
ELEVATED STORY	CODE	H	T
1 STORY	1Y	11.04	7.38
	1Z	11.04	12.20
	1W	11.04	2.30
2 STORIES	2Y	13.58	4.84
	2Z	13.58	9.65
3 STORIES	3Y	16.12	2.30
	3Z	16.12	7.10
4 STORIES	4Z	18.66	4.60

APTOS Technology CONFIDENTIAL
 This document, and all information it contains, are the confidential, proprietary property of APTOS Technology. Disclosure, duplication or distribution of this document, or any information it contains, in whole or part, without prior written permission from APTOS Technology is strictly prohibited

GENERAL TOLERANCE UNLESS OTHERWISE SPECIFIED	
XXX. ± X	.XX ± 0.10
XX. ± X	.XXX ± X
X. ± 0.50	X' ± 1"
.X ± 0.30	.X' ± X'

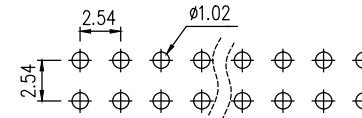
APD APTOS TECHNOLOGY

REV. A	DRAWN	09/15/09	QPHFZ
DATE 09/15/09	CHECKED		2.54mm 2 Row Elevated Socket
SCALE As shown	APPROVED		PRODUCT NO. QPHFZ-XX-XX-XX-FG
UNIT mm		SIZE A4	FILE NAME: QPHFZ LF APD.dwg

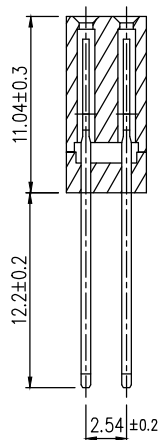


SPECIFICATIONS

CURRENT RATING : 3 AMPS
 INSULATOR RESISTANCE : 5000 MEGOHMS MIN.
 CONTACT RESISTANCE : 20 MILLIOHMS MAX.
 DIELECTRIC WITHSTANDING : AC 500V
 OPERATING TEMPERATURE : -40°C - +105°C
 MAX PROCESSING TEMP : 230°C FOR 30~60 SECONDS
 (260°C FOR 10 SECONDS)
 CONTACT MATERIAL : PHOSPHOR BRONZE
 INSULATOR MATERIAL : POLYESTER, UL 94V-0
 STANDARD : NYLON-6T
 CONTACT PLATED : FULL GOLD FLASH



P.C.B LAYOUT



HOW TO ORDER

QPHFZ-XX-XX-XX-FG
 Series No. (XX)
 Number of Contacts (XX, 40, 50, 64)
 Elevated Story Type (XX, See "Table A")
 Contact Plated (FG)

Selective Plated Type Gold Plated on Contact Area Tin Plated on Solder Area	Full Tin Type
VB : Gold Flash, Tin 100u" VC : Gold 3u", Tin 100u" VD : Gold 5u", Tin 100u" VE : Gold 10u", Tin 100u" VF : Gold 15u", Tin 100u" VJ : Gold 30u", Tin 100u"	VA: Tin 100u"

APTOS Technology CONFIDENTIAL
 This document, and all information it contains, are the confidential, proprietary property of APTOS Technology. Disclosure, duplication or distribution of this document, or any information it contains, in whole or part, without prior written permission from APTOS Technology is strictly prohibited

Table A

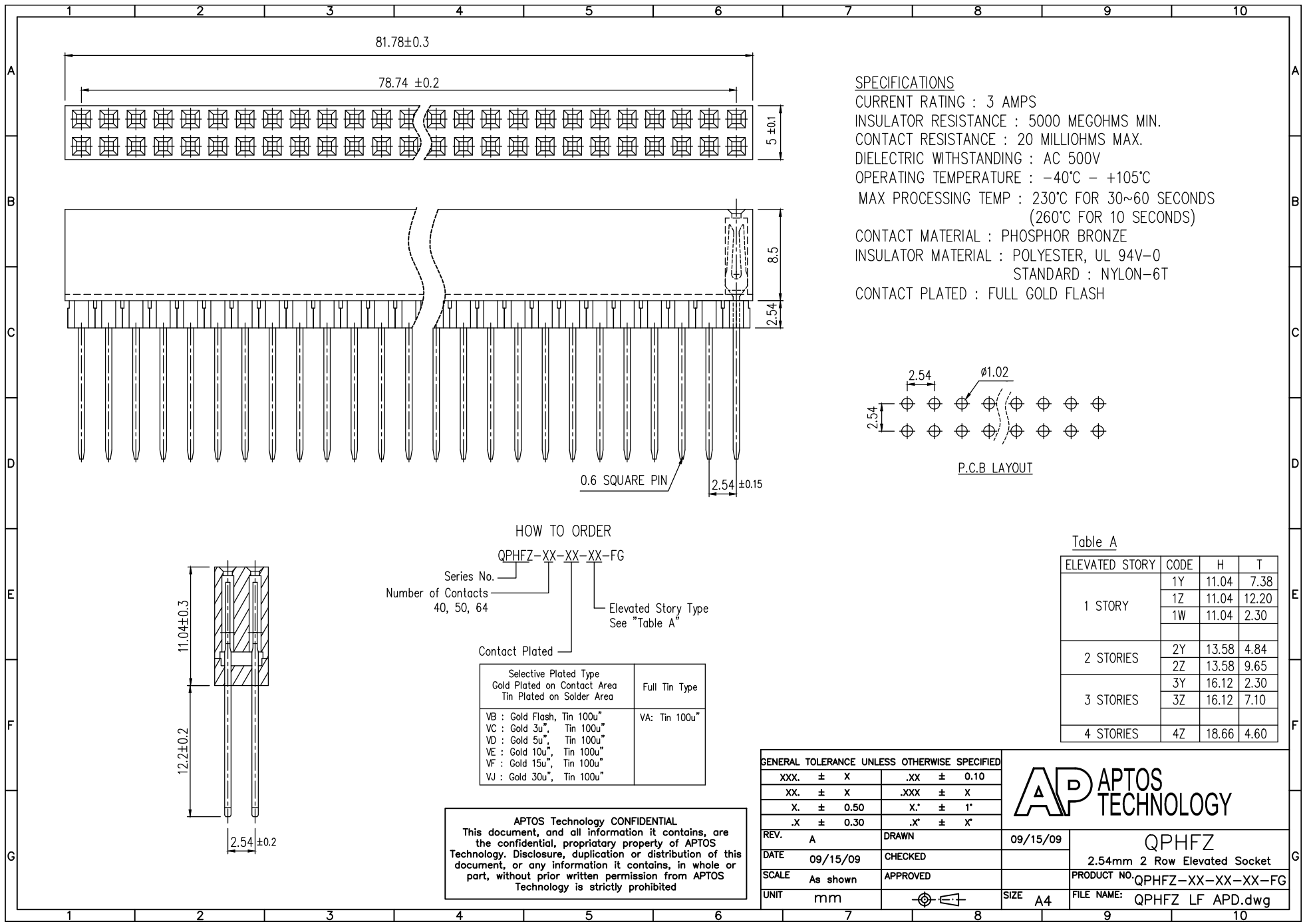
ELEVATED STORY	CODE	H	T
1 STORY	1Y	11.04	7.38
	1Z	11.04	12.20
	1W	11.04	2.30
2 STORIES	2Y	13.58	4.84
	2Z	13.58	9.65
3 STORIES	3Y	16.12	2.30
	3Z	16.12	7.10
4 STORIES	4Z	18.66	4.60

GENERAL TOLERANCE UNLESS OTHERWISE SPECIFIED

XXX. ± X	.XX ± 0.10
XX. ± X	.XXX ± X
X. ± 0.50	X' ± 1"
.X ± 0.30	.X' ± X'

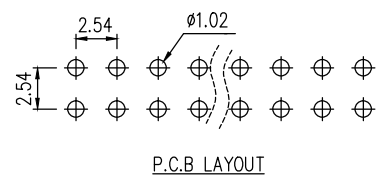


REV. A	DRAWN	09/15/09	QPHFZ 2.54mm 2 Row Elevated Socket
DATE 09/15/09	CHECKED		
SCALE As shown	APPROVED		PRODUCT NO. QPHFZ-XX-XX-XX-FG
UNIT mm		SIZE A4	FILE NAME: QPHFZ LF APD.dwg



SPECIFICATIONS

CURRENT RATING : 3 AMPS
 INSULATOR RESISTANCE : 5000 MEGOHMS MIN.
 CONTACT RESISTANCE : 20 MILLIOHMS MAX.
 DIELECTRIC WITHSTANDING : AC 500V
 OPERATING TEMPERATURE : -40°C - +105°C
 MAX PROCESSING TEMP : 230°C FOR 30~60 SECONDS
 (260°C FOR 10 SECONDS)
 CONTACT MATERIAL : PHOSPHOR BRONZE
 INSULATOR MATERIAL : POLYESTER, UL 94V-0
 STANDARD : NYLON-6T
 CONTACT PLATED : FULL GOLD FLASH



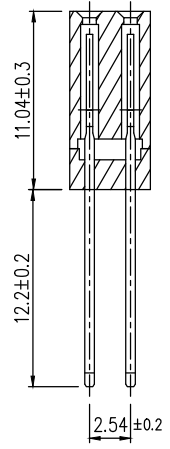
HOW TO ORDER

QPHFZ-XX-XX-XX-FG
 Series No. _____
 Number of Contacts 40, 50, 64 _____
 Elevated Story Type See "Table A" _____
 Contact Plated _____

Selective Plated Type Gold Plated on Contact Area Tin Plated on Solder Area	Full Tin Type
VB : Gold Flash, Tin 100u" VC : Gold 3u", Tin 100u" VD : Gold 5u", Tin 100u" VE : Gold 10u", Tin 100u" VF : Gold 15u", Tin 100u" VJ : Gold 30u", Tin 100u"	VA: Tin 100u"

Table A

ELEVATED STORY	CODE	H	T
1 STORY	1Y	11.04	7.38
	1Z	11.04	12.20
	1W	11.04	2.30
2 STORIES	2Y	13.58	4.84
	2Z	13.58	9.65
3 STORIES	3Y	16.12	2.30
	3Z	16.12	7.10
4 STORIES	4Z	18.66	4.60



APTOS Technology CONFIDENTIAL
 This document, and all information it contains, are the confidential, proprietary property of APTOS Technology. Disclosure, duplication or distribution of this document, or any information it contains, in whole or part, without prior written permission from APTOS Technology is strictly prohibited

GENERAL TOLERANCE UNLESS OTHERWISE SPECIFIED	
XXX. ± X	.XX ± 0.10
XX. ± X	.XXX ± X
X. ± 0.50	X.* ± 1"
.X ± 0.30	.X* ± X"

REV. A	DRAWN	09/15/09
DATE 09/15/09	CHECKED	
SCALE As shown	APPROVED	
UNIT mm		



QPHFZ
 2.54mm 2 Row Elevated Socket
 PRODUCT NO: QPHFZ-XX-XX-XX-FG
 FILE NAME: QPHFZ LF APD.dwg