

**SPECIFICATIONS**

Housing Material: LCP UL94V-01, Black  
 Contact Material: Copper Alloys  
 Underplate: Nickel 50u" Min  
 Contact Area: Gold Plating  
 Solder Area: Matte Tin Plating

**PST-XX VJ-157-H-X-FG**

ND. OF POLES: 20 POLES, 40 POLES, 120 POLES

FG: RoHS Compliant

C:Film & Reel  
 R:Pad & Reel

Halogen Free

Card Thickness: 1.57mm

VJ: 30u" Gold Plating on Contact Area  
 Matte Tin Plating on Solder Area

AP P/N	No OF POS	A	B	C	D
PST-40VJ-157-H-X-FG	40	18.90	21	16.80	36.60
PST-60VJ-157-H-X-FG	60	26.90	31	24.80	52.60

GENERAL TOLERANCE UNLESS OTHERWISE SPECIFIED	
XXX. ± X	.XX ± 0.10
XX. ± X	.XXX ± X
X. ± 0.50	X' ± 1"
.X ± 0.30	.X' ± X'

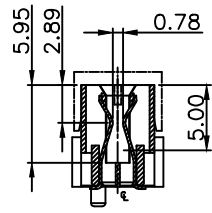
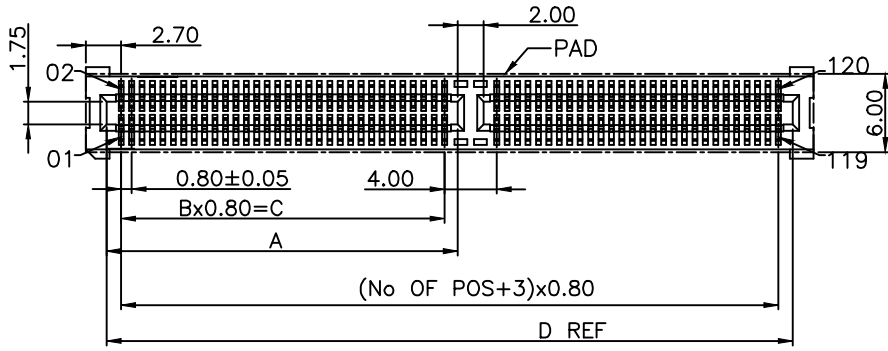
REV. A	DRAWN	07/11/17
DATE 07/11/2017	CHECKED	
SCALE As shown	APPROVED	
UNIT mm		



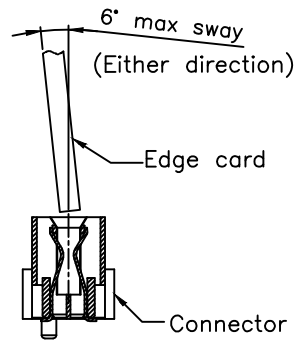
**PST Series**  
 High Speed Edge Card 1.57mm

PRODUCT NO. PST-XXVJ-157-H-X-FG  
 FILE NAME: PST-XXVJ-157-H-X-FG.dwg

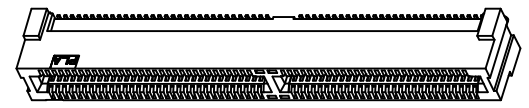
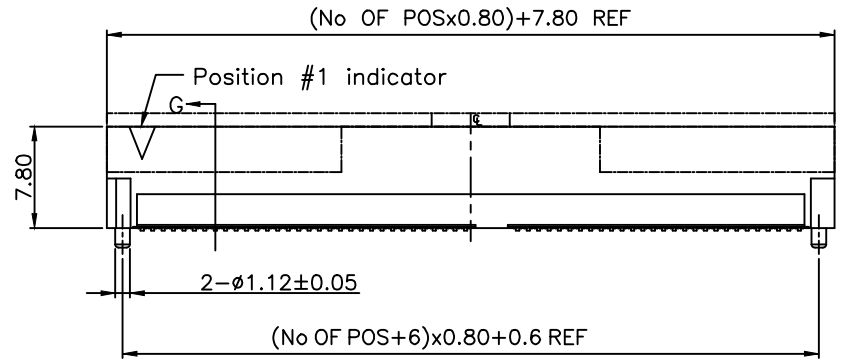
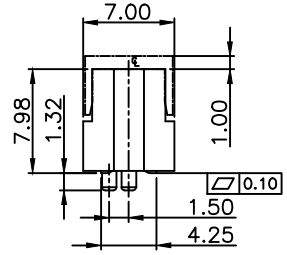
**APTOS Technology CONFIDENTIAL**  
 This document, and all information it contains, are the confidential, proprietary property of APTOS Technology. Disclosure, duplication or distribution of this document, or any information it contains, in whole or part, without prior written permission from APTOS Technology is strictly prohibited



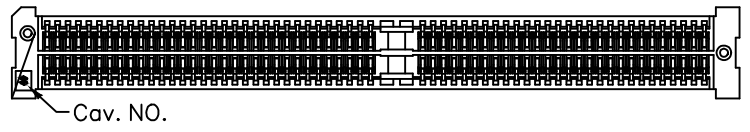
SECTION G-G



Mate View



3D VIEW



AP P/N	No OF POS	A	B	C	D
PST-40VJ-157-H-X-FG	40	18.90	21	16.80	36.60
PST-60VJ-157-H-X-FG	60	26.90	31	24.80	52.60

GENERAL TOLERANCE UNLESS OTHERWISE SPECIFIED

XXX. ± X	.XX ± 0.10
XX. ± X	.XXX ± X
X. ± 0.50	X' ± 1"
.X ± 0.30	.X' ± X"



APTOS Technology CONFIDENTIAL  
 This document, and all information it contains, are the confidential, proprietary property of APTOS Technology. Disclosure, duplication or distribution of this document, or any information it contains, in whole or part, without prior written permission from APTOS Technology is strictly prohibited

REV. A	DRAWN	07/11/17
DATE 07/11/2017	CHECKED	
SCALE As shown	APPROVED	
UNIT mm		

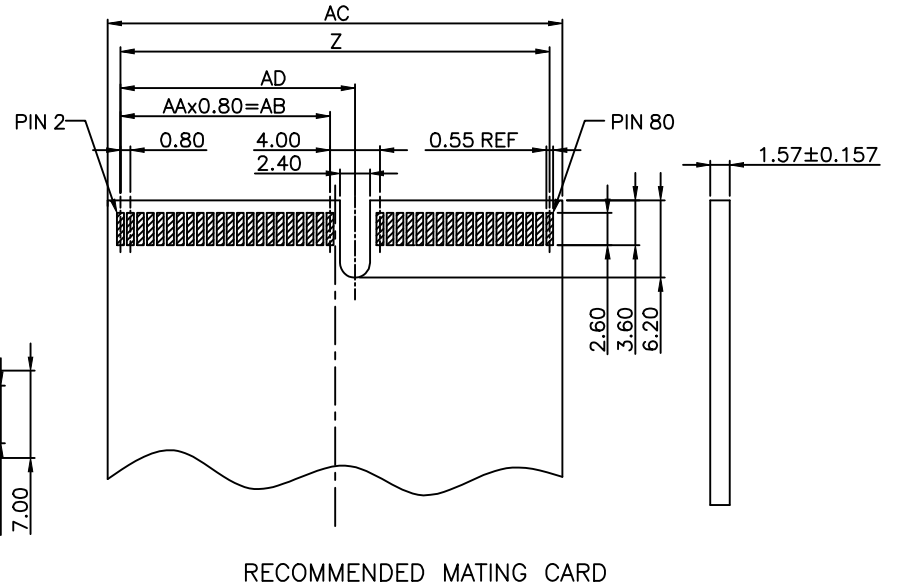
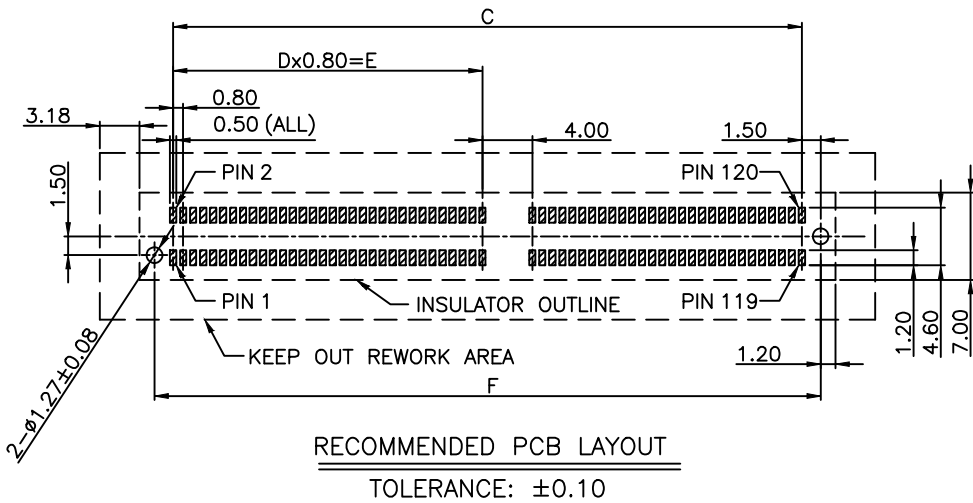
PST Series  
 High Speed Edge Card 1.57mm  
 PRODUCT NO. PST-XXVJ-157-H-X-FG  
 FILE NAME: PST-XXVJ-157-H-X-FG.dwg  
 Page 2/8

APTOS Technology CONFIDENTIAL  
 This document, and all information it contains, are the confidential, proprietary property of APTOS Technology. Disclosure, duplication or distribution of this document, or any information it contains, in whole or part, without prior written permission from APTOS Technology is strictly prohibited

Products high frequency signal transmission should meet the following conditions:

- 1.0 Set adjacent 7Pin contacts as a signal group.
- 2.0 Pin assignment of the adjacent 7Pin contacts as follows.

Pin Number	Description
1	Ground
2	Active
3	Active
4	Ground
5	Quiet
6	Quiet
7	Ground



APTOS Technology CONFIDENTIAL  
This document, and all information it contains, are the confidential, proprietary property of APTOS Technology. Disclosure, duplication or distribution of this document, or any information it contains, in whole or part, without prior written permission from APTOS Technology is strictly prohibited

AP P/N	No OF POS	C	D	E	F
PST-40VJ-157-H-X-FG	40	34.40	21	16.80	37.40
PST-60VJ-157-H-X-FG	60	50.40	31	24.80	53.40

AP P/N	No OF POS	Z	AA	AB	AC	AD
PST-40VJ-157-H-X-FG	40	34.40	21	16.80	36.45	18.80
PST-60VJ-157-H-X-FG	60	50.40	31	24.80	52.45	26.80

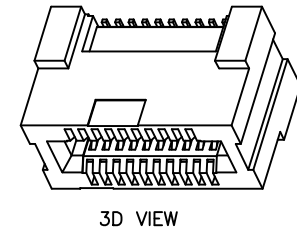
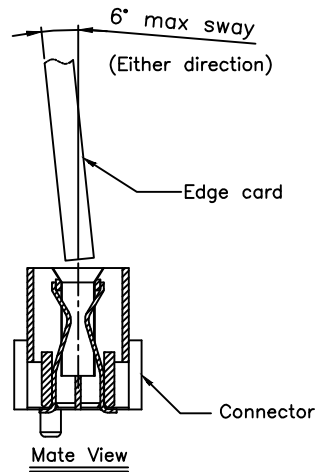
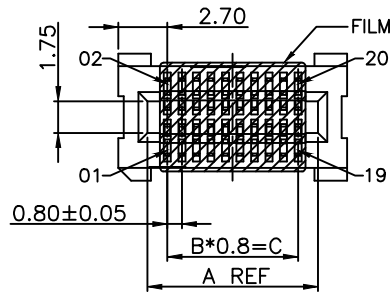
GENERAL TOLERANCE UNLESS OTHERWISE SPECIFIED	
XXX. $\pm$ X	.XX $\pm$ 0.10
XX. $\pm$ X	.XXX $\pm$ X
X. $\pm$ 0.50	X' $\pm$ 1"
.X $\pm$ 0.30	.X' $\pm$ X'

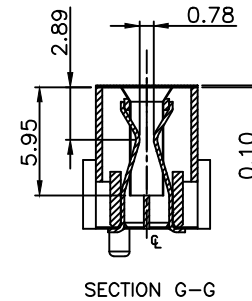
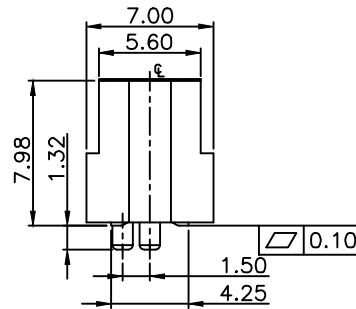
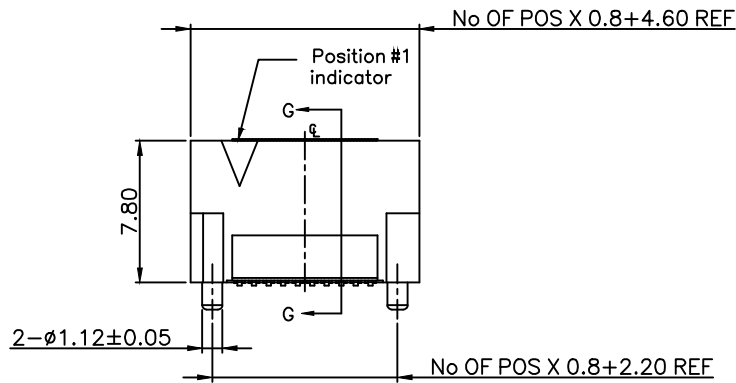
REV. A	DRAWN	07/11/17
DATE 07/11/2017	CHECKED	
SCALE As shown	APPROVED	
UNIT mm		Page 3/8



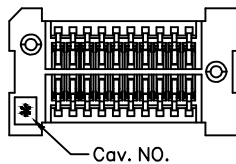
**PST Series**  
High Speed Edge Card 1.57mm  
PRODUCT NO. PST-XXVJ-157-H-X-FG  
FILE NAME: PST-XXVJ-157-H-X-FG.dwg



3D VIEW



SECTION G-G



**APTOS Technology CONFIDENTIAL**  
 This document, and all information it contains, are the confidential, proprietary property of APTOS Technology. Disclosure, duplication or distribution of this document, or any information it contains, in whole or part, without prior written permission from APTOS Technology is strictly prohibited

AP P/N	No OF POS	A	B	C
PST-40VJ-157-H-X-FG	10	9.40	9	7.20
PST-60VJ-157-H-X-FG	20	17.40	19	15.20

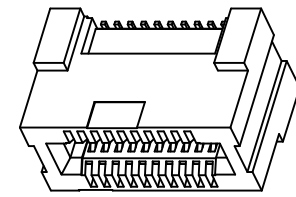
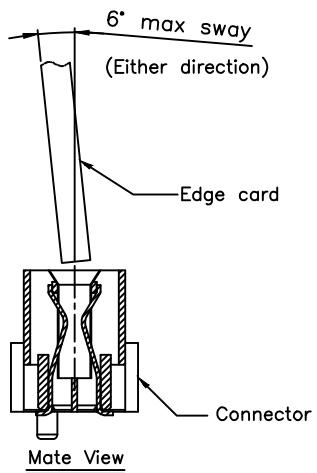
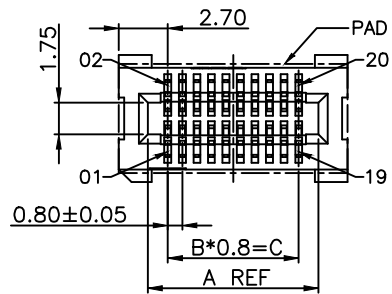
GENERAL TOLERANCE UNLESS OTHERWISE SPECIFIED

XXX. ± X	.XX ± 0.10
XX. ± X	.XXX ± X
X. ± 0.50	X' ± 1"
.X ± 0.30	.X' ± X'

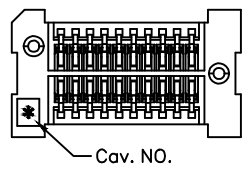
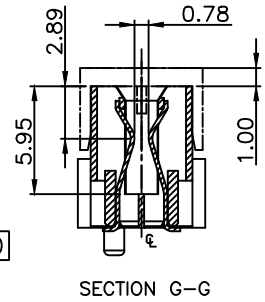
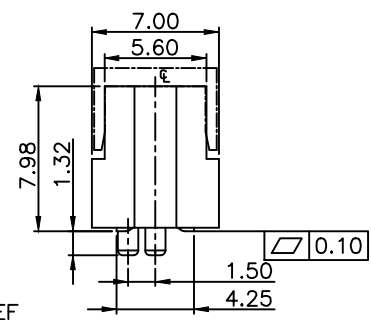
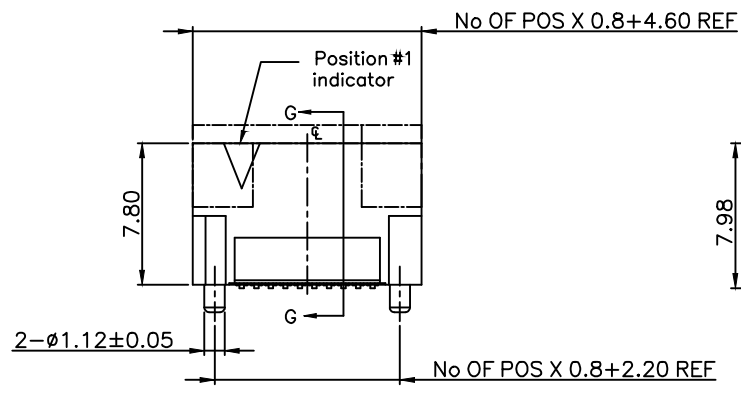
**APD APTOS TECHNOLOGY**

REV. A	DRAWN	07/11/17
DATE 07/11/2017	CHECKED	
SCALE As shown	APPROVED	
UNIT mm		Page 4/8

**PST Series**  
 High Speed Edge Card 1.57mm  
 PRODUCT NO. PST-XXVJ-157-H-X-FG  
 FILE NAME: PST-XXVJ-157-H-X-FG.dwg



3D VIEW



**APTOS Technology CONFIDENTIAL**  
 This document, and all information it contains, are the confidential, proprietary property of APTOS Technology. Disclosure, duplication or distribution of this document, or any information it contains, in whole or part, without prior written permission from APTOS Technology is strictly prohibited

AP P/N	No OF POS	A	B	C
PST-40VJ-157-H-X-FG	10	9.40	9	7.20
PST-60VJ-157-H-X-FG	20	17.40	19	15.20

GENERAL TOLERANCE UNLESS OTHERWISE SPECIFIED	
XXX. ± X	.XX ± 0.10
XX. ± X	.XXX ± X
X. ± 0.50	X.' ± 1"
.X ± 0.30	.X' ± X"

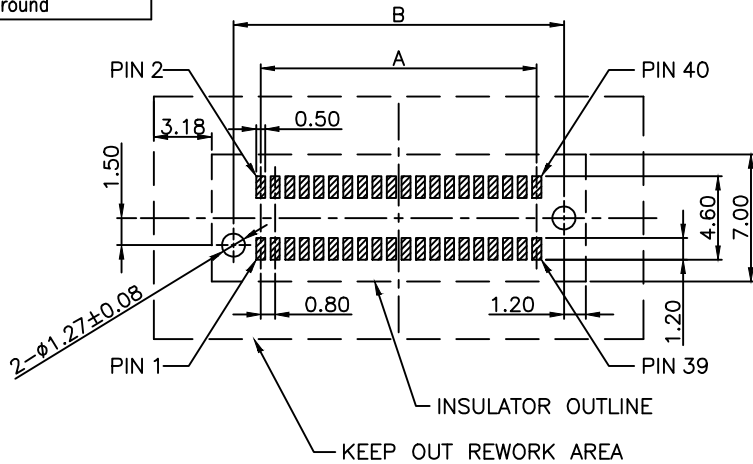


REV. A	DRAWN	07/11/17	PST Series High Speed Edge Card 1.57mm
DATE 07/11/2017	CHECKED		
SCALE As shown	APPROVED		PRODUCT NO. PST-XXVJ-157-H-X-FG
UNIT mm		Page 5/8	FILE NAME: PST-XXVJ-157-H-X-FG.dwg

Products high frequency signal transmission should meets the following conditions:

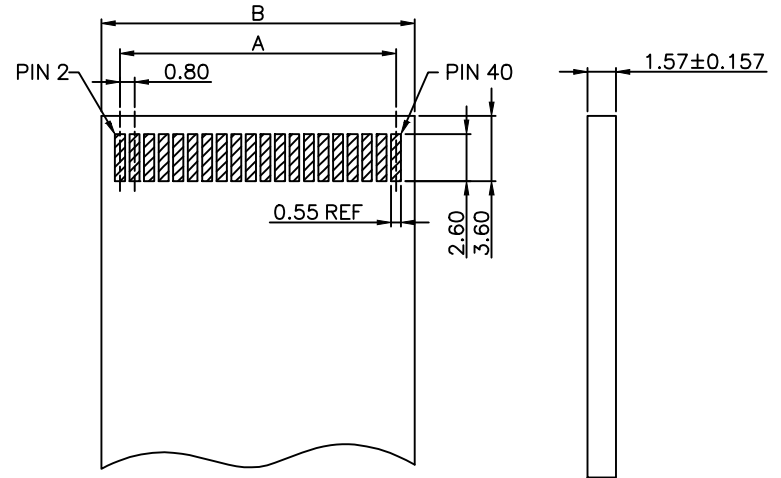
- 1.0 Set adjacent 7Pin contacts as a signal group.
- 2.0 Pin assignment of the adjacent 7Pin contacts as follows.

Pin Number	Description
1	Ground
2	Active
3	Active
4	Ground
5	Quiet
6	Quiet
7	Ground



RECOMMENDED PCB LAYOUT

TOLERANCE:  $\pm 0.10$



RECOMMENDED MATING CARD

AP P/N	No OF POS	A	B
PST-40VJ-157-H-X-FG	10	7.20	9.25
PST-60VJ-157-H-X-FG	20	15.2	17.25

GENERAL TOLERANCE UNLESS OTHERWISE SPECIFIED

XXX. $\pm$ X	.XX $\pm$ 0.10
XX. $\pm$ X	.XXX $\pm$ X
X. $\pm$ 0.50	X.' $\pm$ 1"
.X $\pm$ 0.30	.X' $\pm$ X"

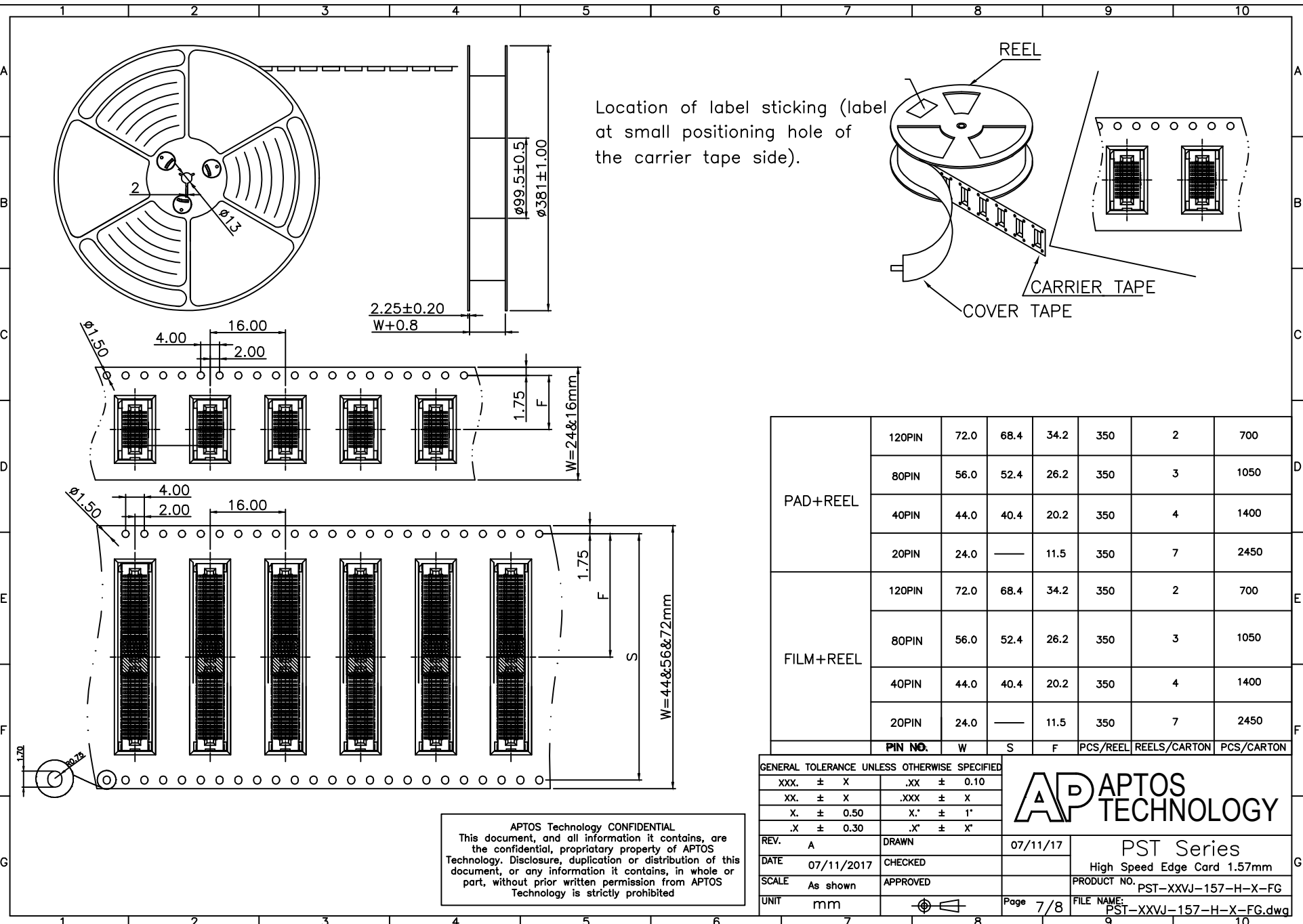
**AP** APTOS TECHNOLOGY

REV. A	DRAWN	07/11/17
DATE 07/11/2017	CHECKED	
SCALE As shown	APPROVED	
UNIT mm		Page 6/8

PST Series	
High Speed Edge Card 1.57mm	
PRODUCT NO.	PST-XXVJ-157-H-X-FG
FILE NAME:	PST-XXVJ-157-H-X-FG.dwg

AP P/N	No OF POS	A	B
PST-40VJ-157-H-X-FG	10	7.20	10.20
PST-60VJ-157-H-X-FG	20	15.20	18.20

APTOS Technology CONFIDENTIAL  
 This document, and all information it contains, are the confidential, proprietary property of APTOS Technology. Disclosure, duplication or distribution of this document, or any information it contains, in whole or part, without prior written permission from APTOS Technology is strictly prohibited



APTOS Technology CONFIDENTIAL  
 This document, and all information it contains, are the confidential, proprietary property of APTOS Technology. Disclosure, duplication or distribution of this document, or any information it contains, in whole or part, without prior written permission from APTOS Technology is strictly prohibited

	PIN NO.	W	S	F	PCS/REEL	REELS/CARTON	PCS/CARTON
PAD+REEL	120PIN	72.0	68.4	34.2	350	2	700
	80PIN	56.0	52.4	26.2	350	3	1050
	40PIN	44.0	40.4	20.2	350	4	1400
FILM+REEL	20PIN	24.0	—	11.5	350	7	2450
	120PIN	72.0	68.4	34.2	350	2	700
	80PIN	56.0	52.4	26.2	350	3	1050
	40PIN	44.0	40.4	20.2	350	4	1400
	20PIN	24.0	—	11.5	350	7	2450

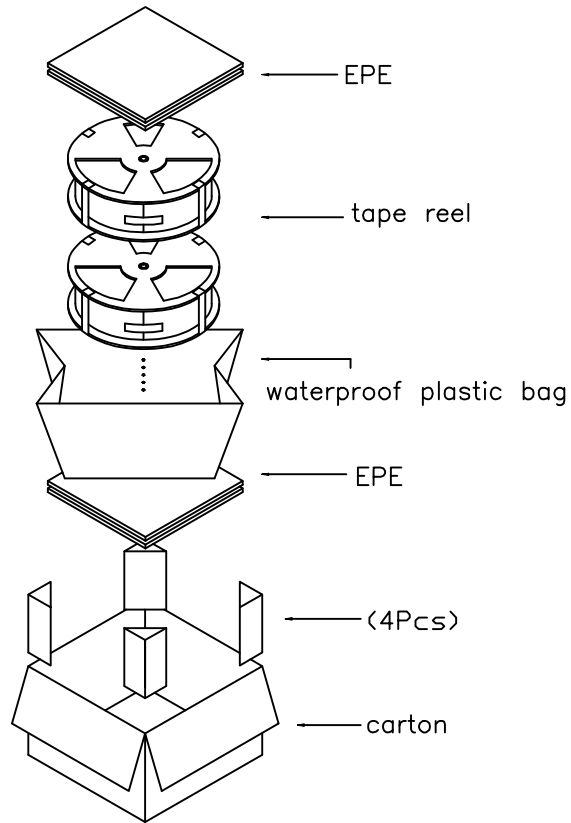
GENERAL TOLERANCE UNLESS OTHERWISE SPECIFIED

XXX. ± X	.XX ± 0.10
XX. ± X	.XXX ± X
X. ± 0.50	X.' ± 1"
.X ± 0.30	.X' ± X"



REV. A	DRAWN	07/11/17
DATE 07/11/2017	CHECKED	
SCALE As shown	APPROVED	
UNIT mm		Page 7/8

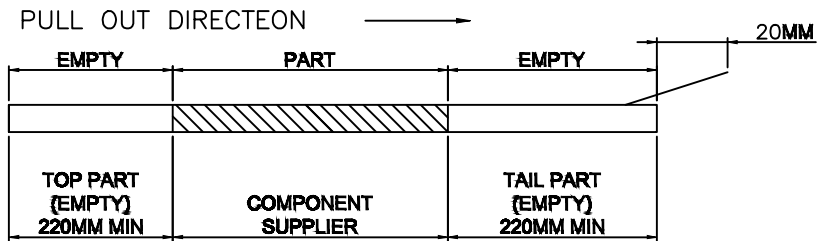
PST Series  
 High Speed Edge Card 1.57mm  
 PRODUCT NO. PST-XXVJ-157-H-X-FG  
 FILE NAME: PST-XXVJ-157-H-X-FG.dwg



NOTES

1. Packing q'ty of each reel & carton as up table shown.
2. Use cover tape to cover and hot melt machine to seal up.
3. Every carton use 2pcs EPE.
4. Put reels in the carton and use adhesive tape to seal up.

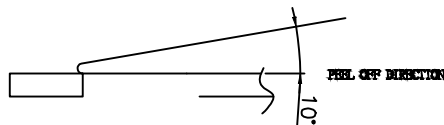
5. LEAD TAPE LENGTH



6. PEELING OFF FORCE OF TOP TAPE: 0.1~1.3N(10.2gf~130gf)

THIS REQUIREMENT SHOULD BE APPLIED AT SHIPMENT:

PEELING OFF SHOULD NOT BE ALLOWED DURING TRANSPORTATION



APTOS Technology CONFIDENTIAL  
This document, and all information it contains, are the confidential, proprietary property of APTOS Technology. Disclosure, duplication or distribution of this document, or any information it contains, in whole or part, without prior written permission from APTOS Technology is strictly prohibited

GENERAL TOLERANCE UNLESS OTHERWISE SPECIFIED	
XXX. ± X	.XX ± 0.10
XX. ± X	.XXX ± X
X. ± 0.50	X' ± 1'
.X ± 0.30	.X' ± X'
REV. A	DRAWN
DATE 07/11/2017	CHECKED
SCALE As shown	APPROVED
UNIT mm	



07/11/17	PST Series
High Speed Edge Card 1.57mm	PRODUCT NO. PST-XXVJ-157-H-X-FG
Page 8/8	FILE NAME: PST-XXVJ-157-H-X-FG.dwg