

CIRCUITS	DIM A	DIM B	DIM C	REMARK (mm)	
				With peg	Without peg
8	2.40	4.95	3.95	⊕	
10	3.20	5.75	4.75	○	⊕
12	4.00	6.55	5.55	○	⊕
14	4.80	7.35	6.35	○	⊕
16	5.60	8.15	7.15	○	⊕
18	6.40	8.95	7.95	○	⊕
20	7.20	9.75	8.75	○	⊕
22	8.00	10.55	9.55	○	⊕
24	8.80	11.35	10.35	○	⊕
26	9.60	12.15	11.15	○	⊕
28	10.40	12.95	11.95	○	⊕
30	11.20	13.75	12.75	○	⊕
32	12.00	14.55	13.55	⊕	
34	12.80	15.35	14.35	○	
36	13.60	16.15	15.15	○	⊕
40	15.20	17.75	16.75	○	⊕
42	16.00	18.55	17.55	○	⊕
44	16.80	19.35	18.35	○	⊕
50	19.20	21.75	20.75	○	⊕
60	23.20	25.75	24.75	⊕	
64	24.80	27.35	26.35	⊕	
70	27.20	29.75	28.75	○	⊕
80	31.20	33.75	32.75	○	
90	35.20	37.75	36.75	⊕	
100	39.20	41.75	40.75	○	○

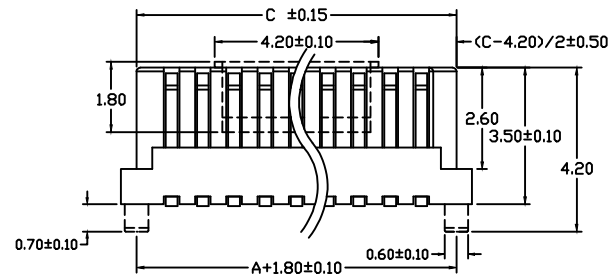
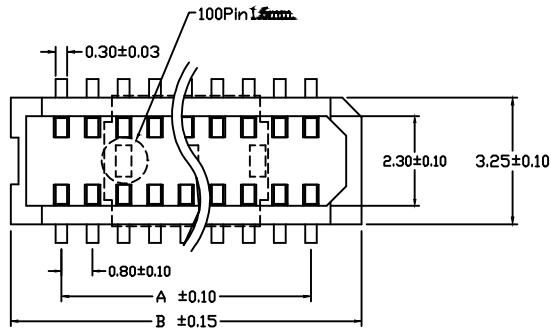
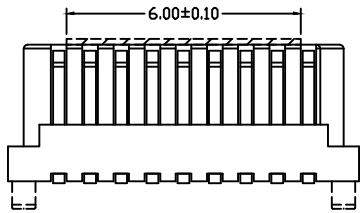
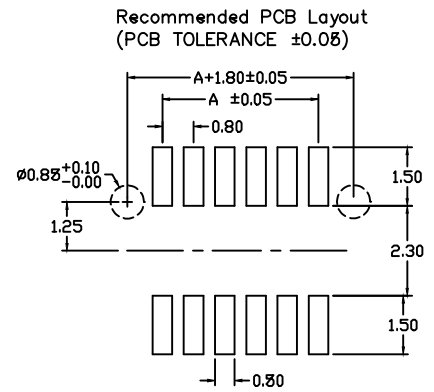
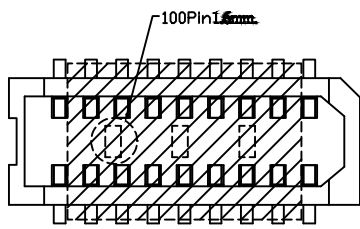


Diagram	Molding description
○	mass production & assemble mold
⊙	sample & assemble mold
⊕	mass production & fix mold
⊕	sample & fix mold



APTOS Technology CONFIDENTIAL
 This document, and all information it contains, are the confidential, proprietary property of APTOS Technology. Disclosure, duplication or distribution of this document, or any information it contains, in whole or part, without prior written permission from APTOS Technology is strictly prohibited

SPECIFICATIONS

Current Rating: 0.5 Amps AC/DC Max.
 Insulator Resistance: 100 Megohms min.
 Contact Resistance: 40m ohm Max.
 Dielectric withstanding: AC 500V
 Color: Natural
 Contact Material: Phosphor Bronze
 Operating Temperature: -40°C~+105°C
 Insulator Material: High Temp Thermoplastic
 Finish: Gold all over Nickel

MPWS1-XX XX X X-FG

S=Straight
 FG: RoHS Compliant

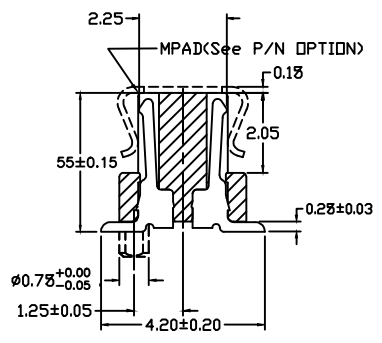
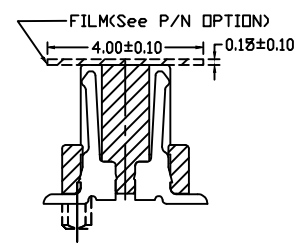
ND. OF CONTACTS

PLATING

Definition	Code
● Tin plated:	VA
● Gold plated:	
flash VB	10μ" VE
	15μ" VF
	30μ" VJ
● Duplex Plating:	
flash VK	10μ" VP
	15μ" VN
	30μ" VU
● Standard:	VB

Packaging:
 Null: Tube (w/o Film)
 K: Reel (w/o Film)
 C: Film & Reel
 B: MP Pad & Reel
 E: MP Pad & Tube

0: w/o Locating Peg
 1: With Locating Peg



GENERAL TOLERANCE UNLESS OTHERWISE SPECIFIED	
XXX. ± X	.XX ± 0.10
XX. ± X	.XXX ± X
X. ± 0.50	X. ± 1"
.X ± 0.30	.X ± X"

REV.	A	DRAWN	09/15/09
DATE	09/15/09	CHECKED	
SCALE	As shown	APPROVED	
UNIT	mm		SIZE A4



MPWS1 Series
 0.8mm Board to Board Plug
 PRODUCT NO. MPWS1-XXXXXX-FG
 FILE NAME: MPWS1-XXXXXX-FG.dwg