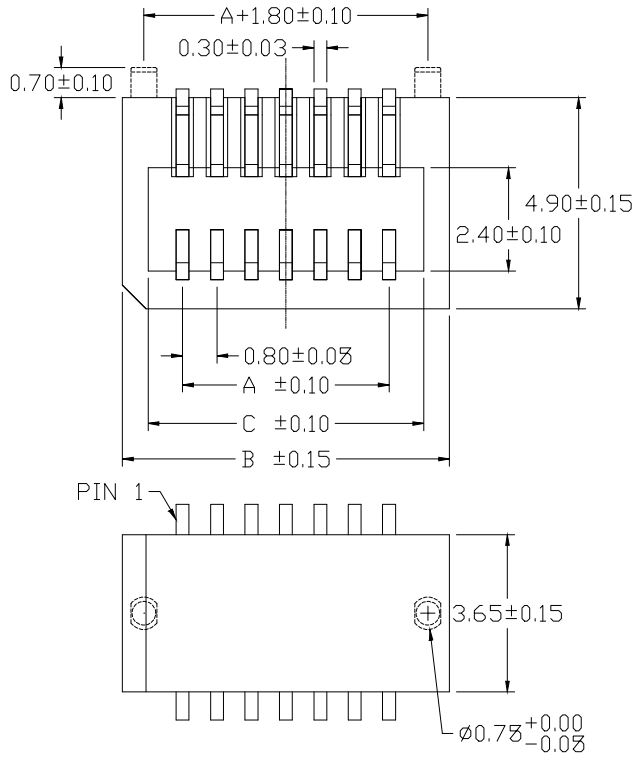


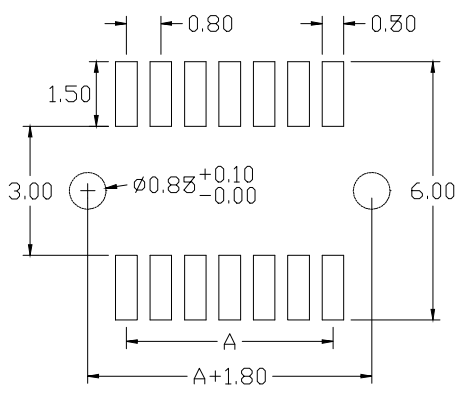
CIRCUITS	DIM A	DIM B	DIM C	Without peg	With peg
08	2.40	5.20	4.00	⊕	
10	3.20	6.00	4.80	⊕	⊕
12	4.00	6.80	5.60	⊕	⊕
14	4.80	7.60	6.40	⊕	⊕
16	5.60	8.40	7.20	⊕	⊕
18	6.40	9.20	8.00	⊕	⊕
20	7.20	10.00	8.80	⊕	⊕
22	8.00	10.80	9.60	⊕	⊕
24	8.80	11.60	10.40	⊕	⊕
26	9.60	12.40	11.20	⊕	⊕
28	10.40	13.20	12.00	⊕	⊕
30	11.20	14.00	12.80	⊕	⊕
32	12.00	14.80	13.60	⊕	
34	12.80	15.60	14.40	⊕	
36	13.60	16.40	15.20	⊕	
38	14.40	17.20	16.00	⊕	
40	15.20	18.00	16.80	⊕	⊕
42	16.00	18.80	17.60	⊕	
44	16.80	19.60	18.40	⊕	
46	17.60	20.40	19.20	⊕	
48	18.40	21.20	20.00	⊕	
50	19.20	22.00	20.80	⊕	⊕
52	20.00	22.80	21.60	⊕	
54	20.80	23.60	22.40	⊕	
56	21.60	24.40	23.20	⊕	
58	22.40	25.20	24.00	⊕	
60	23.20	26.00	24.80	⊕	
62	24.00	26.80	25.60	⊕	
64	24.80	27.60	26.40	⊕	⊕
66	25.60	28.40	27.20	⊕	
68	26.40	29.20	28.00	⊕	
70	27.20	30.00	28.80	⊕	⊕
72	28.00	30.80	29.60	⊕	
74	28.80	31.60	30.40	⊕	
76	29.60	32.40	31.20	⊕	
78	30.40	33.20	32.00	⊕	
80	31.20	34.00	32.80	⊕	
82	32.00	34.80	33.60	⊕	
84	32.80	35.60	34.40	⊕	
86	33.60	36.40	35.20	⊕	
88	34.40	37.20	36.00	⊕	
90	35.20	38.00	36.80	⊕	
92	36.00	38.80	37.60	⊕	
94	36.80	39.60	38.40	⊕	
96	37.60	40.40	40.00	⊕	
98	38.40	41.20	40.00	⊕	
100	39.20	42.00	40.80	⊕	⊕

Diagram	Molding description
○	mass production & assemble mold
⊙	sample & assemble mold
⊕	mass production & fix mold
⊕	sample & fix mold

APTOS Technology CONFIDENTIAL
 This document, and all information it contains, are the confidential, proprietary property of APTOS Technology. Disclosure, duplication or distribution of this document, or any information it contains, in whole or part, without prior written permission from APTOS Technology is strictly prohibited



Recommended PCB Layout
 (PCB TOLERANCE ±0.05)

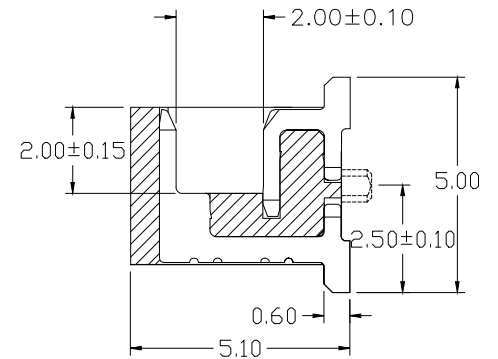
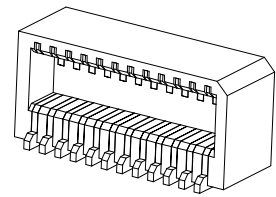


SPECIFICATIONS

Current Rating: 0.5 Amps AC/DC Max.
 Insulator Resistance: 100 Megohms min.
 Contact Resistance: 70m ohm Max.
 Dielectric withstanding: AC 500V
 Operating Temperature: -40~+85°C
 Contact Material: Phosphor Bronze
 Insulator Material: High Temperature Thermoplastic, UL 94V-0
 Color: White
 Finish: Gold all over Nickel

MPVR1-XX XX X X-FG
 R=Right Angle
 ND. OF CONTACTS
 PLATING
 FG: RoHS Compliant
 Packaging:
 Null: Tube
 K:Reel
 0:w/o Locating Peg
 1:With Locating Peg

Definition	Code
● Tin plated:	VA
● Gold plated:	
flash VB	10µ" VE
3µ" VC	15µ" VF
5µ" VD	30µ" VJ
● Duplex Plating:	
flash VK	10µ" VP
3µ" VL	15µ" VN
5µ" VM	30µ" VU
○Standard:	VB



GENERAL TOLERANCE UNLESS OTHERWISE SPECIFIED			
XXX.	± X	.XX	± 0.10
XX.	± X	.XXX	± X
X.	± 0.50	X.'	± 1"
.X	± 0.30	.X'	± X"
REV.	A	DRAWN	09/15/09
DATE	09/15/09	CHECKED	
SCALE	As shown	APPROVED	
UNIT	mm		



MPVR1 Series
 0.8mm Board to Board Socket R/A
 PRODUCT NO. MPVR1XXXXXX-FG
 FILE NAME: MPVR1XXXXXX-FG.dwg