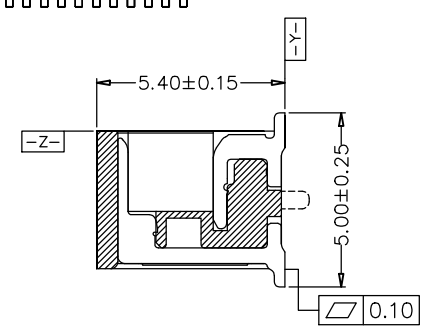
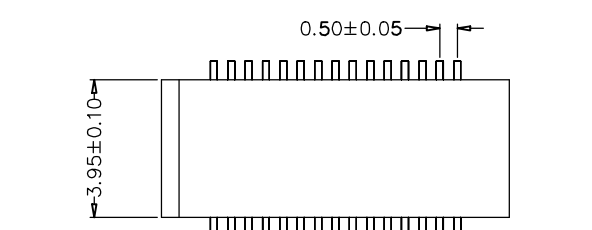
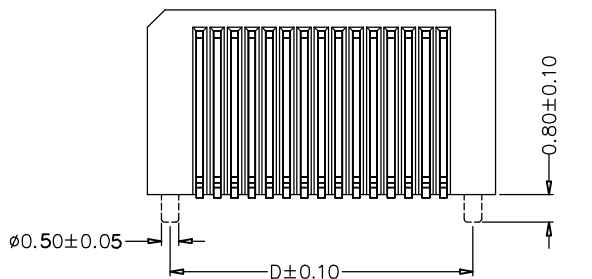
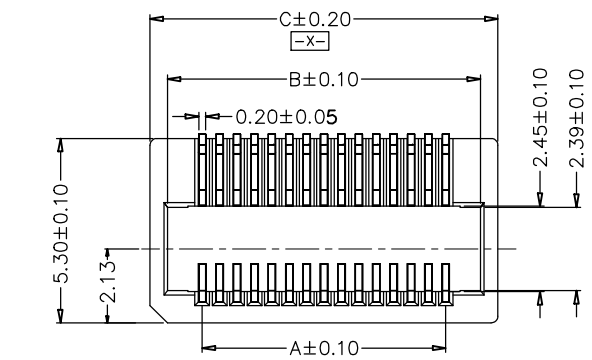


CIRCUITS	DIM A	DIM B	DIM C	DIM D	DIM W/O PEG	WITH PEG
10	2.00	4.03	5.00	3.70		⊕
12	2.50	4.53	5.50	4.20		⊕
14	3.00	5.03	6.00	4.70		⊕
16	3.50	5.53	6.50	5.20		⊕
18	4.00	6.03	7.00	5.70		⊕
20	4.50	6.53	7.50	6.20		⊕
22	5.00	7.03	8.00	6.70		⊕
24	5.50	7.53	8.50	7.20		⊕
26	6.00	8.03	9.00	7.70		⊕
28	6.50	8.53	9.80	8.20		⊕
30	7.00	9.03	10.00	8.70		⊕
32	7.50	9.50	10.80	9.20		⊕
34	8.00	10.03	11.00	9.70		⊕
36	8.50	10.53	11.80	10.20		⊕
38	9.00	11.03	12.00	10.70		⊕
40	9.50	11.53	12.80	11.20		⊕
42	10.00	12.03	13.00	11.70		⊕
44	10.50	12.53	13.50	12.20		⊕
46	11.00	13.03	14.00	12.70		⊕
48	11.50	13.53	14.50	13.20		⊕
50	12.00	14.03	15.00	13.70		⊕
52	12.50	14.53	15.50	14.20		⊕
54	13.00	15.03	15.50	14.70		⊕
56	13.50	15.53	16.50	15.20		⊕
58	14.00	16.03	17.00	15.70		⊕
60	14.50	16.53	17.50	16.20		⊕
62	15.00	17.03	18.00	16.70		⊕
64	15.50	17.53	18.50	17.20		⊕
66	16.00	18.03	19.00	17.70		⊕
68	16.50	18.53	19.50	18.20		⊕
70	17.00	19.03	20.00	18.70		⊕
72	17.50	19.53	20.50	19.20		⊕
74	18.00	20.03	21.00	19.70		⊕
76	18.50	20.53	21.50	20.20		⊕
78	19.00	21.03	22.00	20.70		⊕
80	19.50	21.53	22.50	21.20		⊕
82	20.00	22.03	23.00	21.70		⊕
84	20.50	22.53	23.50	22.20		⊕
86	21.00	23.00	24.00	22.70		⊕
88	21.50	23.50	24.50	23.20		⊕
90	22.00	24.03	25.00	23.70		⊕
92	22.50	24.53	25.50	24.20		⊕
94	23.00	25.03	26.00	24.70		⊕
96	23.50	25.53	26.50	25.20		⊕
98	24.00	26.03	27.00	25.70		⊕
100	24.50	26.53	27.50	26.20		⊕
102	25.00	27.03	28.00	26.70		⊕
104	25.50	27.53	28.50	27.20		⊕
106	26.00	28.03	29.00	27.70		⊕
108	26.50	28.53	29.50	28.20		⊕
110	27.00	29.03	30.00	28.70		⊕
112	27.50	29.53	30.50	29.20		⊕
114	28.00	30.03	31.00	29.70		⊕
116	28.50	30.53	31.50	30.20		⊕
118	29.00	31.03	32.00	30.70		⊕
120	29.50	31.53	32.50	31.20		⊕



SPECIFICATIONS

Current Rating: 0.5 Amps AC/DC Max.
 Insulator Resistance: 100 Megohms min.
 Contact Resistance: 60m ohm Max.
 Dielectric withstanding: AC 500V
 Durability: 30 Cycles Min.
 Contact Retention: 150g Min. Per contact
 Extraction Force: 11g Min Per Contact
 Insertion Force: 110g Max Per Contact

MPBR1-XX XX X X-FG

R=Right Angle
 NO. OF CONTACTS
 PLATING
 FG: RoHS Compliant
 Packaging:
 Null: Tube (w/o Film)
 K: Reel(w/o Film)

Definition	Code
● Tin plated:	VA
● Gold plated:	
flash VB	10μ" VE
	15μ" VF
	30μ" VJ
● Duplex Plating:	
flash VK	10μ" VP
	15μ" VN
	30μ" VU
●Standard:	VB

0:w/o Locating Peg
 1:With Locating Peg

Recommended PCB Layout (PCB TOLERANCE ±0.05)

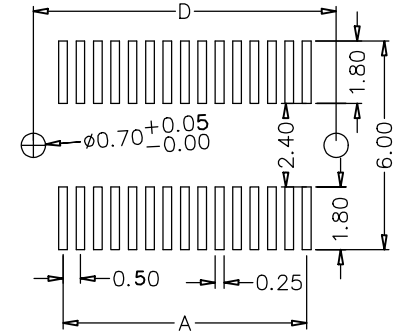


Diagram	Molding description
○	mass production & assemble mold
⊙	sample & assemble mold
⊕	mass production & fix mold
⊗	sample & fix mold

APTOS Technology CONFIDENTIAL
 This document, and all information it contains, are the confidential, proprietary property of APTOS Technology. Disclosure, duplication or distribution of this document, or any information it contains, in whole or part, without prior written permission from APTOS Technology is strictly prohibited

GENERAL TOLERANCE UNLESS OTHERWISE SPECIFIED	
XXX. ± X	.XX ± 0.10
XX. ± X	.XXX ± X
X. ± 0.50	X.' ± 1"
.X ± 0.30	.X" ± X"



REV.	A	DRAWN	09/15/09	MPBR1 Series
DATE	09/15/09	CHECKED		0.5mm Board to Board Female
SCALE	As shown	APPROVED		PRODUCT NO. MPBR1-XXXXXX-FG
UNIT	mm		SIZE A4	FILE NAME MPBR1-XXXXXX-FG.dwg