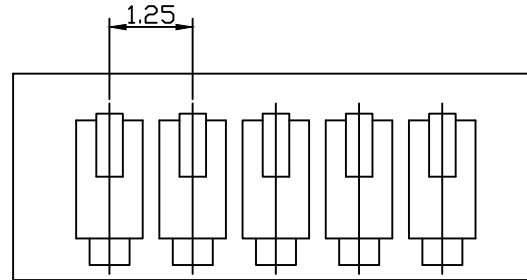


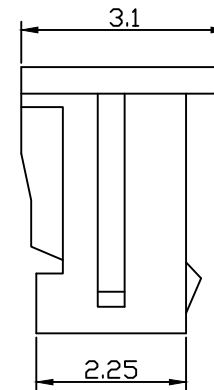
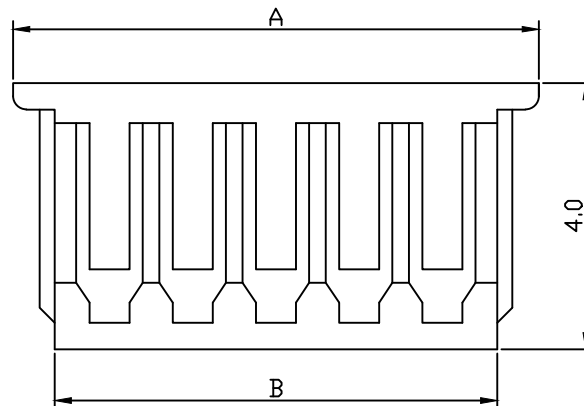
# SPECIFICATIONS

Insulator Material: PBT, Glass Filled, UL 94V-0  
 Operating Temperature: -40°C~+85°C



FWH-3218A-XX-L-G  
 Number of Contacts RoHS Compliant

CIRCUITS	DIMENSION	
	A	B
2	4.15	2.90
3	5.40	4.15
4	6.65	5.40
5	7.90	6.65
6	9.15	7.90
7	10.40	9.15
8	11.65	10.40
9	12.90	11.65
10	14.15	12.90
11	15.40	14.15
12	16.65	15.40
13	17.90	16.65
14	19.15	17.90
15	20.40	19.15
16	21.65	20.40
17	22.90	21.65
18	24.15	22.90
19	25.40	24.15
20	26.65	25.40



**APTOS Technology CONFIDENTIAL**  
 This document, and all information it contains, are the confidential, proprietary property of APTOS Technology. Disclosure, duplication or distribution of this document, or any information it contains, in whole or part, without prior written permission from APTOS Technology is strictly prohibited.

GENERAL TOLERANCE UNLESS OTHERWISE SPECIFIED			
XXX. ± X	.XX ± 0.20		
XX. ± X	.XXX ± 0.10		
X. ± X	X' ± 3'		
.X ± 0.30	.X' ± X'		
REV. A	DRAWN	11/13/09	FWH Series
DATE 11/13/09	CHECKED		1.25mm Wire to Board Connector
SCALE 1:1	APPROVED		PRODUCT NO. FWH-3218A-XX-L-G
UNIT mm		SIZE A4	FILE NAME: FWH LF APD.DWG