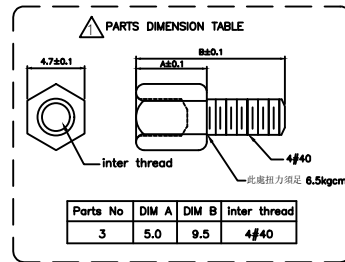


Recommended Panel Cut-Out
TOLERANCE: ±0.05mm



SPECIFICATION

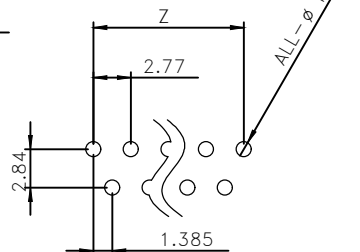
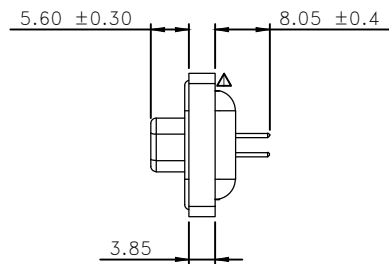
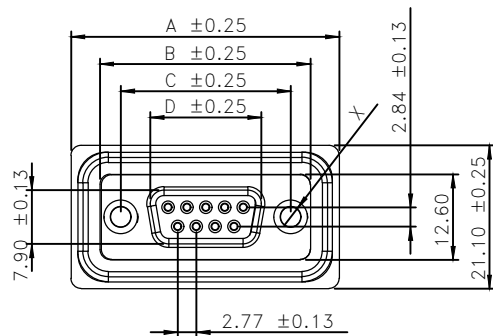
MATERIAL
Insulator: Thermoplastic
Contacts: Copper Alloy
Shell: Steel
O-ring: Silicone
Sealant: Epoxy-Resin
Rivet: Copper Alloy

CONTACT PLATING

Underplate :50u"~150u" Nickel
Contact Area :1u"~30u" Selective Gold
Rivet :50u"~100u" Nickel
ELECTRICAL
Operation Voltage :250 VAC Max
Current Rating :3 Amps Max
Contact Resistance :15 Mohms Min 500 VDA
Dielectric Withstanding Voltage 1000 VAC/Minute
Temperature Range :-55°C TO +105°C
Degree of Protection :IP67(IEC 60529)
PART NO.

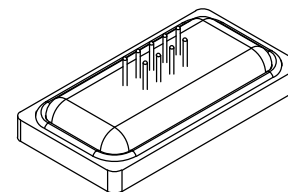
DWPP 1 XX F S S N X A -FG
1 2 3 4 5 6 7 8 9 10

- 1.SERIES NO.
- 2.INSULATOR COLOR:
1=Black
- 3.CONTACT NUMBER:
09 15 25 37
- 4.CONTACT TYPE:
F=Female
- 5.PLATED ON THE CONTACT SIDE:
S=Gold Flash
- 6.PLATED ON THE SOLDERING SIDE:
S=Gold Flash
- 7.SHELL PLATING:
N=Nickel Plated
- 8.PROCESS OPTION
DIM FOR "X"
1=Fixed Hex-Rivet 4.5*4.9(M3)
2=Fixed Hex-Rivet 4.5*4.9(4#40)
3=Fixed Hex-Rivet 4.5*4.9(4#40)
+Loose 5*9.5 Screws
- 9.PACKING:
A=TRAY
- 10.GREEN OPTION
FG=ROHS (Bright)



Recommended P.C.B LAYOUT
TOLERANCE: ±0.05mm

PIN	A	B	C	D	X	Y	Z
9	39.50	31.00	25.00	16.34	25.20	20	11.08
15	48.00	39.30	33.32	24.66	33.50	28.30	19.39
25	61.50	53.20	47.04	38.38	47.20	42.00	33.24
37	77.80	69.50	63.50	54.84	63.70	58.50	49.86



UNLESS OTHERWISE SPECIFIED TOLERANCE	
ANG.	±5°
0.	±0.50
.0	±0.30
.00	±0.20

SCALE: AS SHOWN UNIT: mm

DRAWN **RITA** 05/09/2013

CHECKED / /

APPROVED / /

DATE



DRAWN NAME:
WATER-PROOF D-SUB (DIP180° FEMALE)

PRODUCT NO. DWPP1XXFSSNXA-FG

FILE NAME: DWPP LF APD

B ECN-1305013(Jocy)△(1,F)(5,D)(6,G)(10,E)& Add. 5*9.5 Screws Option. 05/09/2013

A ECN-1110046(POLO) 10/04/11

REV. DESCRIPTION DATE