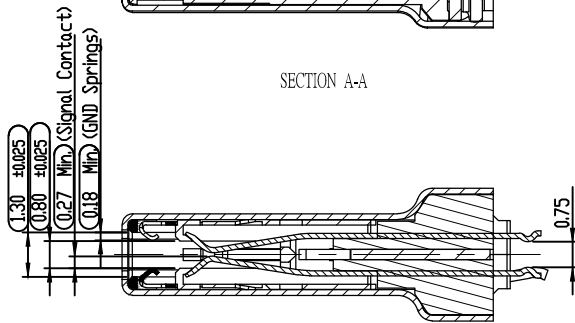
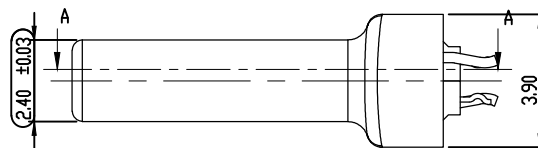


SECTION A-A



SECTION B-B



SPECIFICATION

MATERIAL

Insulator: LCP,Black
 Contacts: Copper
 Shell: Stainless Steel

CONTACT PLATING

Underplate: 50u"~100u" Nickel
 Contact area: 30u" Selective gold,
 Solder tails area: 100u"~150u" Tin (Lead Free)

ELECTRICAL

Operation voltage: 20 V
 Current rating: 5 Amps max.
 Insulation resistance: 100 Mohms min @ 100 VDC
 Dielectric withstanding voltage: 100 VAC / minute
 Temperature range: -40°C TO +105°C
 Mating cycles: 10,000 insertions
 Part no.

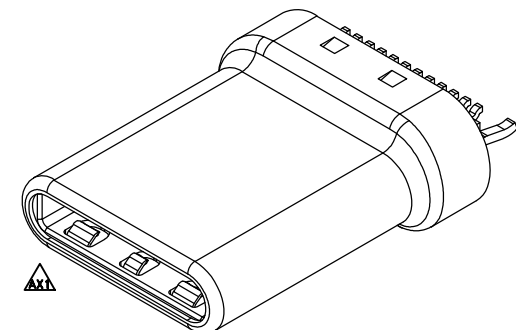
BPC E 2X A X T F N 7 1 3 FG
 1 2 3 4 5 6 7 8 9 10 11 12

1.SERIES NO.

BPC=USB Series
 2.E=Straddle Type
 3.CONTACT NUMBER:
 22=22 PINS
 24=24 PINS
 4.CONTACT TYPE:
 A=MALE(LCP)

5.CONTACT AREA PLATING:

D=30u" Gold
 6.SOLDER TAILS AREA PLATING:
 T=100u"~150u" TIN(Lead Free)
 7.APPLY TYPE:
 F=Cable Plug
 N=NI (Extruded Shell)
 9.7=Extruded Shell
 10.PACKING STYLE:
 1=TRAY+Cap
 11.INSULATOR COLOR:
 3=BLACK
 12.GREEN OPTION:
 FG=RoHS2 (Matte)(Halogen Free)



AX1

UNLESS OTHERWISE SPECIFIED TOLERANCE	
ANG.	±5°
0.	±0.50
.0	±0.30
.00	±0.20

AP APTOS TECHNOLOGY

For SIP

SCALE: AS SHOWN UNIT: mm

AX4 ECR- (Jerry_Chou)See dwg 2/2 03/20/2017

DRAWN JERRY 03/20/2017

DRAWN NAME: USB Type C Plug (Extruded Shell) 1/2

AX3 ECR-1703022(Jerry_Chou)修改電鍍規格&塑膠(7,G) AX3 03/01/2017

CHECKED

PRODUCT NO. BPCE2XAXTFN713-FG

AX2 ECR-1703021(Jerry_Chou)修改電鍍規格(7,G) AX2 02/16/2017

APPROVED

FILE NAME: BPCE2XAXTFN713-FG.dwg

REV.	DESCRIPTION	DATE	SIZE	REV.	FILE NAME:
1			A4	AX4	BPCE2XAXTFN713-FG.dwg

