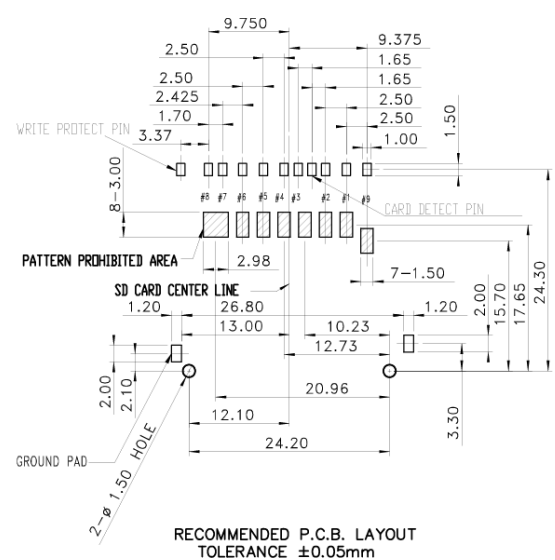
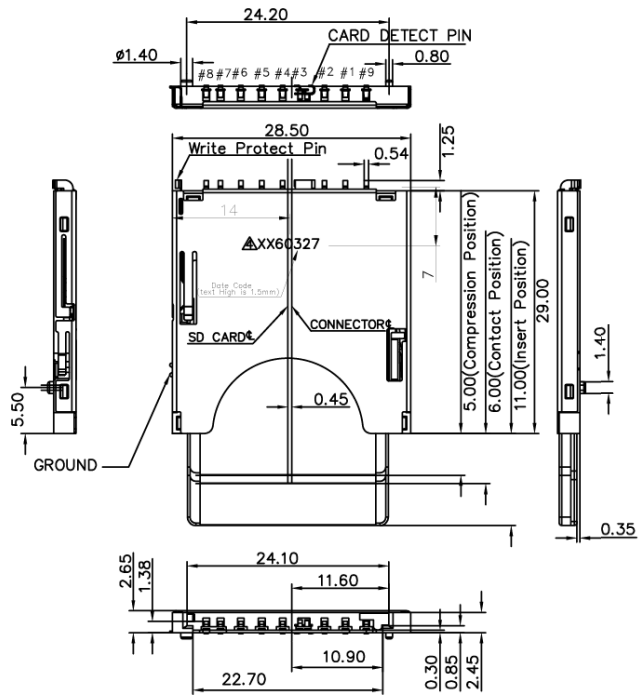
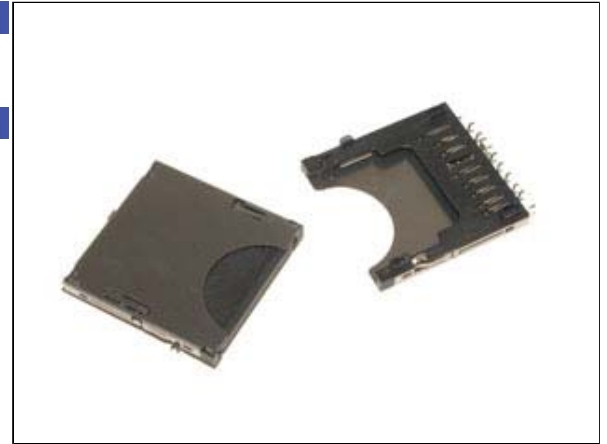


**Application and Features**

Low 2.65mm Profile  
 Push/Push Style Ejector  
 Recommended Part Mating:

**Specifications**

Contact Material	Copper Alloy
Contact Plating	1u~30u Gold on Contact, 100u Tin on Solder Tail
Contact Resistance	40 m ohm max
Current Rating	0.5 Amp max
Dielectric Withstanding	250 VAC
Environmental	RoHS Compliant
Insulator Material	High Temp Thermoplastic, UL 94V-0
Insulator Resistance	1000 Megohm min
Mating Cycles	10000 Cycles
Operating Temperature	-20° ~ +85° C
Operational Voltage	3.3V
Shell Material	Stainless Steel



RECOMMENDED P.C.B. LAYOUT  
 TOLERANCE  $\pm 0.05\text{mm}$

**How to Order**

Please replace "X" with appropriate coding listed in the tables below.

CSD06 X 09 P XX A 1 X - X  
 1                      2    3                      4    5

Item	Description	Options
1	Environment Type	RoHS (Matte Tin)=F, Sony SS-00259 (Matte Tin)=K
2	Contact Plating	Gold Flash=VS, 3u" Gold=VR, 5u" Gold=VA, 10u" Gold=VB, 15u" Gold=VC, 30u" Gold=VD
3	Shell Material	Stainless Steel=S
4	Color	Black=3
5	Environment Type	High Temp RoHS Compliant=FG

Products specifications are subject to be changed without notice.  
 Please contact your local Aptos Technology sales office for further confirmation.